



**TTAF**<sup>®</sup>

ELEKTRONİK SAN. VE TİC. A.Ş.

## **ELEKTRONİK MASK**

User Manual



Please read this manual carefully before  
using and keep it in a safe place.

## Technical Specifications

<b>Product Name</b>	: Free Breathing Mask
<b>Style</b>	: Headwear
<b>Weight</b>	: 78g
<b>Size</b>	: 101x97x66 mm
<b>Input Voltage</b>	: 5V
<b>Working Time</b>	: 4-6 Hours
<b>Function</b>	: Air Filtering
<b>Material</b>	: ABS+SILICONE
<b>Level</b>	: $\geq 99$
<b>Rated Power</b>	: 0.75 W
<b>Air Volume</b>	: 5.7-6.9m <sup>3</sup> /h

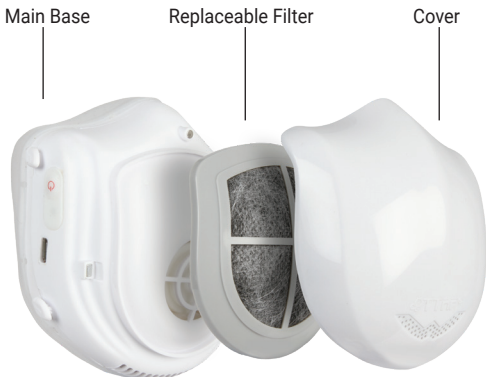
## Product Performance and Features

### 1. Air Cleaner Power System

Micro-motor provides air flow. According to the fluid mechanics principle, the air will be absorbed from the outside of the filter. 6 times faster air intake will allow you to breathe comfortably.

### 2. Filter Protection System

While the micromotor is running, the air is absorbed by the filter. The filter removes particles smaller than 2.5 microns (PM2.5), dust, bacteria, exhaust fumes, pollen, etc. filters the substances. This product will enable people to continue outdoor activities and exercise as usual when the air is dirty.



## Attention Points and Filter Screen Change

1. The filter screen is consumables, need to replace regularly. If the PM2.5 index over 200, the filter can be used 5-8 days. If PM2.5 index less than 200, it can be used 10-15 days.
2. When change the filter, first you need to clamp two sides of filter frame, pull the used filter out, and then put on a new filter.
3. The contaminated area behind the filter needs to be checked. If the contaminated area is large, it is time to replace it with a new one.
4. While changing the filter, be careful not to get the filter wet.
5. If the mask has not been used for a long time, it is recommended to remove the filter from the mask and keep it in the package.

## Product Cleaning and Maintenance

1. **Cleaning the silicone pad:** Remove the silicone pad from the main body and clean with water or alcohol. In long-term use, it is recommended to keep it in boiling water.
2. **Cleaning the one-way valve:** The one-way valve is mounted under the mask. After removing the frame from the mask, you can remove the valve. Clean it by rubbing it with water or alcohol. In long-term use, it is recommended to keep it in boiling water.

## About the Battery

### 1. Battery Performance and Features

The battery is an explosion proof lithium battery with a polymer soft package.

1. Explosion proof packaging does not allow heavy metal release.
2. High energy density and much safer than traditional lithium batteries.
3. Working temperature:  $-19^{\circ}\text{C}$  to  $60^{\circ}\text{C}$
4. Life time:  $0.5 \geq 500$  times

### 2. Battery Disposal

1. Do not disassemble the battery yourself. If you disassemble the battery, the product will be out of warranty.
2. The battery may contain substances that pollute the environment, so take it off when the mask becomes unusable. First you need to turn off the power and remove the silicone pad. Then remove out the 6 screws with a screwdriver and separate the compartment, then you can see the battery. You can pull out the power cord and remove the battery.
3. Dispose of the battery in accordance with local regulations. Do not dispose of the battery with household waste.

## Charger Description

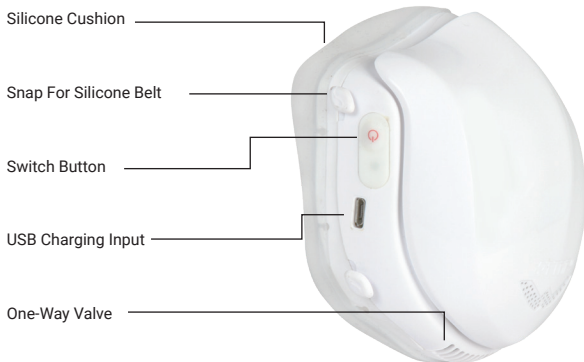
1. When use the mask for the first time, we suggest to use the power inside first, then you can charge it.
2. When the light turns red, it indicates no charge. Need to charge.
3. EWhen connect to electricity supply, indicator light will turn red. When the light turns green, it means fully charged.
4. The charging voltage is 5V, charging current is 0.5C. Please use the correct power adapter (5V, 1A) for charging.

## Notes

1. Working temperature of the mask:  $-19^{\circ}\text{C}$  -  $60^{\circ}\text{C}$
2. Charge the battery at normal room temperature.
3. When it is not used for a long time, please turn off the mask . We recommended to charge it every 3 months.
4. Please keep the mask clean, change the filter regularly.
5. The mask is not suitable for use in anoxic environments.
6. The mask cannot be used under water and in high temperature environments. Change the filter when it gets wet.
7. The mask should be kept in a cool and dry place.
8. The mask is not suitable for shared use with others. It is for personal usage

## Product User Manual

1. Product structure (as shown in the picture)



## 2. Switch and Shift Adjustment

There are two shifts for adjustment. Press it once to set the normal airflow rate. Press it a second time and the airflow rate will be stronger. When you press it a third time, the device will turn off.

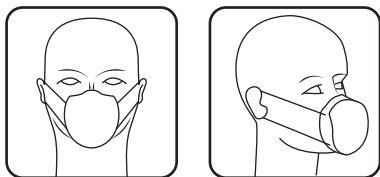
Shift Adjustment	Air Volume (m3 / h)	Ventilation for human (m3/h)
1. shift-basic wind speed	3,4	Normal 0,36-2,50
2. shift-strong wind speed	5,5	Max. 4,20-5,20

## 3. Applicable Scope

The free breathing mask is applicable to protect haze, PM2.5, formaldehyde, pollen, dust, etc. Can be used at outdoor sports, medical place, factories, construction sites, etc

## 4. Fitting Method

Fasten the silicone belt to mask body snaps, then wear it as pictures shown. The silicone belts have five holes for adjustment. It can be adjusted according to your face.



## 5. Basic Parameters

Dimensions	101x97x66mm	Charging Voltage	5 V
Rated Voltage	3,7 V	Rated Voltage	160 MA
Working Time	4-5 h	Working Time	2 - 2,5 h



## After Sales Services

### **1. Free exchange within 7 days.**

After purchasing the mask, if it does not work, we can replace it with a new one within 7 days.

### **2. One year warranty**

One year free repair service is provided after purchasing the mask (starts on the date the mask is purchased). After the guarantee period ends, we can assist you for the repair with an affordable fee.

Product name :

Model :

Seller :

Address :

Contact :



Kavaklı Mh. İstanbul Cd. No:21  
Beylikdüzü -İstanbul /TÜRKİYE

Tel : +90 212 855 82 20 (Pbx)

Fax : +90 212 855 82 21

[www.ttafmedikal.com](http://www.ttafmedikal.com)

    /ttafelectronic